

Board of Public Contractors

PO Box 320279

Stephanie Sills-Lee

AGENCY

ADDRESS

CHIEF EXECUTIVE OFFICER

	Actual Expenses June 30,2020	Estimated Expenses June 30,2021	Requested For June 30,2022	Requested Over/(Under) Estimated	
				AMOUNT	PERCENT
<b>I. A. PERSONAL SERVICES</b>					
1. Salaries, Wages & Fringe Benefits (Base)	992,866	1,057,153	1,057,153		
a. Additional Compensation			99,014		
b. Proposed Vacancy Rate (Dollar Amount)					
c. Per Diem	2,680	3,000	3,000		
<b>Total Salaries, Wages &amp; Fringe Benefits</b>	<b>995,546</b>	<b>1,060,153</b>	<b>1,159,167</b>	<b>99,014</b>	<b>9.34%</b>
2. Travel					
a. Travel & Subsistence (In-State)	115,736	150,000	150,000		
b. Travel & Subsistence (Out-Of-State)	11,172	18,000	18,000		
c. Travel & Subsistence (Out-Of-Country)					
<b>Total Travel</b>	<b>126,908</b>	<b>168,000</b>	<b>168,000</b>		
<b>B. CONTRACTUAL SERVICE S (Schedule B)</b>					
a. Tuition, Rewards & Awards	524	10,000	10,000		
b. Communications, Transportation & Utilities	11,119	50,500	50,500		
c. Public Information	14,875	31,000	31,000		
d. Rents	95,500	97,349	97,349		
e. Repairs & Service	8,356	3,176	3,176		
f. Fees, Professional & Other Services	140,094	171,448	171,448		
g. Other Contractual Services	22,970	19,975	19,975		
h. Data Processing	47,537	70,250	70,250		
i. Other	39,900				
<b>Total Contractual Services</b>	<b>380,875</b>	<b>453,698</b>	<b>453,698</b>		
<b>C. COMMODITIES (Schedule C)</b>					
a. Maintenance & Construction Materials & Supplies	4,700				
b. Printing & Office Supplies & Materials	15,100	24,000	24,000		
c. Equipment, Repair Parts, Supplies & Accessories	2,404	6,000	6,000		
d. Professional & Scientific Supplies & Materials	15,903	15,000	15,000		
e. Other Supplies & Materials	21,568	14,250	14,250		
<b>Total Commodities</b>	<b>59,675</b>	<b>59,250</b>	<b>59,250</b>		
<b>D. CAPITAL OUTLAY</b>					
<b>1. Total Other Than Equipment (Schedule D-1)</b>					
<b>2. Equipment (Schedule D-2)</b>					
b. Road Machinery, Farm & Other Working Equipment					
c. Office Machines, Furniture, Fixtures & Equipment		10,000	10,000		
d. IS Equipment (Data Processing & Telecommunications)	16,067	10,000	10,000		
e. Equipment - Lease Purchase					
f. Other Equipment					
<b>Total Equipment (Schedule D-2)</b>	<b>16,067</b>	<b>20,000</b>	<b>20,000</b>		
<b>3. Vehicles (Schedule D-3)</b>					
<b>4. Wireless Comm. Devices (Schedule D-4)</b>					
<b>E. SUBSIDIES, LOANS &amp; GRANTS (Schedule E)</b>	<b>2,058,291</b>	<b>2,300,000</b>	<b>2,300,000</b>		
<b>TOTAL EXPENDITURES</b>	<b>3,637,362</b>	<b>4,061,101</b>	<b>4,160,115</b>	<b>99,014</b>	<b>2.44%</b>
<b>II. BUDGET TO BE FUNDED AS FOLLOWS:</b>					
Cash Balance-Unencumbered	1,858,484	1,950,266	1,639,165	(311,101)	(15.95%)
General Fund Appropriation (Enter General Fund Lapse Below)					
State Support Special Funds					
Federal Funds _____ Other Special Funds (Specify) _____					
Board of Contractors Operating Fund	1,818,963	1,820,000	1,825,000	5,000	0.27%
Construction Education Fund	1,910,181	1,930,000	1,940,000	10,000	0.52%
Less: Estimated Cash Available Next Fiscal Period	(1,950,266)	(1,639,165)	(1,244,050)	(395,115)	(24.10%)
<b>TOTAL FUNDS (equals Total Expenditures above)</b>	<b>3,637,362</b>	<b>4,061,101</b>	<b>4,160,115</b>	<b>99,014</b>	<b>2.44%</b>
GENERAL FUND LAPSE					
<b>III: PERSONNEL DATA</b>					
Number of Positions Authorized in Appropriation Bill					
a.) Perm Full	16	16	16		
b.) Perm Part					
c.) T-L Full					
d.) T-L Part					
Average Annual Vacancy Rate (Percentage)					
a.) Perm Full					
b.) Perm Part					
c.) T-L Full					
d.) T-L Part					

Approved by: Stephanie Sills-Lee

Submitted by: Jennifer Doan

Date : 8/17/2020 9:38 AM

Official of Board or Commission

Budget Officer: Jennifer Doan / jennifer@msboc.us

Phone Number: 601-354-6161

Title : Deputy Director

REQUEST BY FUNDING SOURCE

Name of Agency : Board of Public Contractors

Specify Funding Sources As Shown Below	FY 2020 Actual Amount	% of Line Item	% of Total Budget	FY 2021 Estimated Amount	% of Line Item	% of Total Budget	FY 2022 Requested Amount	% of Line Item	% of Total Budget
1. General _____ State Support Special (Specify) _____									
2. Budget Contingency Fund									
3. Education Enhancement Fund									
4. Health Care Expendable Fund									
5. Tobacco Control Fund									
6. Capital Expense Fund									
7. Working Cash Stabilization Reserve Fund									
8. BP Settlement Fund									
9. Gulf Coast Restoration Fund									
10. Back To Business Mississippi Grant Fund									
11. MS COVID-19 Relief Payment Fund									
12. DFA CARES Act COVID-19 Fund									
13. MS Tourism Recovery Fund									
14. MS Nonprofit Museums Recovery Fund									
15. Equity in Distance Learning Fund									
16. Postsecondary Education COVID-19 Relief Grant Fund									
17. Independent Schools' COVID-19 Assistance Grant Fund									
18. MS Pandemic Response Broadband Availability Grant Program Fund									
19. MS Emergency Management Agency COVID-19 Fund									
20. MS Electric Cooperatives Broadband COVID-19 Grant Program Fund									
21. COVID-19 Broadband Provider Grant Program Fund									
22. Federal _____ Other Special (Specify) _____									
23. Board of Contractors Operating Fund	995,546	100.00		1,060,153	100.00		1,159,167	100.00	
24. Construction Education Fund									
25.									
26.									
<b>Total Salaries</b>	<b>995,546</b>		<b>27.37%</b>	<b>1,060,153</b>		<b>26.11%</b>	<b>1,159,167</b>		<b>27.86%</b>
1. General _____ State Support Special (Specify) _____									
2. Budget Contingency Fund									
3. Education Enhancement Fund									
4. Health Care Expendable Fund									
5. Tobacco Control Fund									
6. Capital Expense Fund									
7. Working Cash Stabilization Reserve Fund									
8. BP Settlement Fund									
9. Gulf Coast Restoration Fund									
10. Back To Business Mississippi Grant Fund									
11. MS COVID-19 Relief Payment Fund									
12. DFA CARES Act COVID-19 Fund									
13. MS Tourism Recovery Fund									
14. MS Nonprofit Museums Recovery Fund									
15. Equity in Distance Learning Fund									
16. Postsecondary Education COVID-19 Relief Grant Fund									
17. Independent Schools' COVID-19 Assistance Grant Fund									
18. MS Pandemic Response Broadband Availability Grant Program Fund									
19. MS Emergency Management Agency COVID-19 Fund									
20. MS Electric Cooperatives Broadband COVID-19 Grant Program Fund									
21. COVID-19 Broadband Provider Grant Program Fund									
22. Federal _____ Other Special (Specify) _____									
23. Board of Contractors Operating Fund	126,908	100.00		168,000	100.00		168,000	100.00	
24. Construction Education Fund									
25.									
26.									
<b>Total Travel</b>	<b>126,908</b>		<b>3.49%</b>	<b>168,000</b>		<b>4.14%</b>	<b>168,000</b>		<b>4.04%</b>

REQUEST BY FUNDING SOURCE

Name of Agency : Board of Public Contractors

Specify Funding Sources As Shown Below	FY 2020 Actual Amount	% of Line Item	% of Total Budget	FY 2021 Estimated Amount	% of Line Item	% of Total Budget	FY 2022 Requested Amount	% of Line Item	% of Total Budget
1. General _____ State Support Special (Specify) _____									
2. Budget Contingency Fund									
3. Education Enhancement Fund									
4. Health Care Expendable Fund									
5. Tobacco Control Fund									
6. Capital Expense Fund									
7. Working Cash Stabilization Reserve Fund									
8. BP Settlement Fund									
9. Gulf Coast Restoration Fund									
10. Back To Business Mississippi Grant Fund									
11. MS COVID-19 Relief Payment Fund									
12. DFA CARES Act COVID-19 Fund									
13. MS Tourism Recovery Fund									
14. MS Nonprofit Museums Recovery Fund									
15. Equity in Distance Learning Fund									
16. Postsecondary Education COVID-19 Relief Grant Fund									
17. Independent Schools' COVID-19 Assistance Grant Fund									
18. MS Pandemic Response Broadband Availability Grant Program Fund									
19. MS Emergency Management Agency COVID-19 Fund									
20. MS Electric Cooperatives Broadband COVID-19 Grant Program Fund									
21. COVID-19 Broadband Provider Grant Program Fund									
22. Federal _____ Other Special (Specify) _____									
23. Board of Contractors Operating Fund	380,875	100.00		453,698	100.00		453,698	100.00	
24. Construction Education Fund									
25.									
26.									
<b>Total Contractual</b>	<b>380,875</b>		<b>10.47%</b>	<b>453,698</b>		<b>11.17%</b>	<b>453,698</b>		<b>10.91%</b>
1. General _____ State Support Special (Specify) _____									
2. Budget Contingency Fund									
3. Education Enhancement Fund									
4. Health Care Expendable Fund									
5. Tobacco Control Fund									
6. Capital Expense Fund									
7. Working Cash Stabilization Reserve Fund									
8. BP Settlement Fund									
9. Gulf Coast Restoration Fund									
10. Back To Business Mississippi Grant Fund									
11. MS COVID-19 Relief Payment Fund									
12. DFA CARES Act COVID-19 Fund									
13. MS Tourism Recovery Fund									
14. MS Nonprofit Museums Recovery Fund									
15. Equity in Distance Learning Fund									
16. Postsecondary Education COVID-19 Relief Grant Fund									
17. Independent Schools' COVID-19 Assistance Grant Fund									
18. MS Pandemic Response Broadband Availability Grant Program Fund									
19. MS Emergency Management Agency COVID-19 Fund									
20. MS Electric Cooperatives Broadband COVID-19 Grant Program Fund									
21. COVID-19 Broadband Provider Grant Program Fund									
22. Federal _____ Other Special (Specify) _____									
23. Board of Contractors Operating Fund	59,675	100.00		59,250	100.00		59,250	100.00	
24. Construction Education Fund									
25.									
26.									
<b>Total Commodities</b>	<b>59,675</b>		<b>1.64%</b>	<b>59,250</b>		<b>1.46%</b>	<b>59,250</b>		<b>1.42%</b>

REQUEST BY FUNDING SOURCE

Name of Agency : Board of Public Contractors

Specify Funding Sources As Shown Below	FY 2020 Actual Amount	% of Line Item	% of Total Budget	FY 2021 Estimated Amount	% of Line Item	% of Total Budget	FY 2022 Requested Amount	% of Line Item	% of Total Budget
1. General _____ State Support Special (Specify) _____									
2. Budget Contingency Fund									
3. Education Enhancement Fund									
4. Health Care Expendable Fund									
5. Tobacco Control Fund									
6. Capital Expense Fund									
7. Working Cash Stabilization Reserve Fund									
8. BP Settlement Fund									
9. Gulf Coast Restoration Fund									
10. Back To Business Mississippi Grant Fund									
11. MS COVID-19 Relief Payment Fund									
12. DFA CARES Act COVID-19 Fund									
13. MS Tourism Recovery Fund									
14. MS Nonprofit Museums Recovery Fund									
15. Equity in Distance Learning Fund									
16. Postsecondary Education COVID-19 Relief Grant Fund									
17. Independent Schools' COVID-19 Assistance Grant Fund									
18. MS Pandemic Response Broadband Availability Grant Program Fund									
19. MS Emergency Management Agency COVID-19 Fund									
20. MS Electric Cooperatives Broadband COVID-19 Grant Program Fund									
21. COVID-19 Broadband Provider Grant Program Fund									
22. Federal _____ Other Special (Specify) _____									
23. Board of Contractors Operating Fund									
24. Construction Education Fund									
25.									
26.									
<b>Total Capital Other Than Equipment</b>									
1. General _____ State Support Special (Specify) _____									
2. Budget Contingency Fund									
3. Education Enhancement Fund									
4. Health Care Expendable Fund									
5. Tobacco Control Fund									
6. Capital Expense Fund									
7. Working Cash Stabilization Reserve Fund									
8. BP Settlement Fund									
9. Gulf Coast Restoration Fund									
10. Back To Business Mississippi Grant Fund									
11. MS COVID-19 Relief Payment Fund									
12. DFA CARES Act COVID-19 Fund									
13. MS Tourism Recovery Fund									
14. MS Nonprofit Museums Recovery Fund									
15. Equity in Distance Learning Fund									
16. Postsecondary Education COVID-19 Relief Grant Fund									
17. Independent Schools' COVID-19 Assistance Grant Fund									
18. MS Pandemic Response Broadband Availability Grant Program Fund									
19. MS Emergency Management Agency COVID-19 Fund									
20. MS Electric Cooperatives Broadband COVID-19 Grant Program Fund									
21. COVID-19 Broadband Provider Grant Program Fund									
22. Federal _____ Other Special (Specify) _____									
23. Board of Contractors Operating Fund	16,067	100.00		20,000	100.00		20,000	100.00	
24. Construction Education Fund									
25.									
26.									
<b>Total Capital Equipment</b>	<b>16,067</b>		<b>0.44%</b>	<b>20,000</b>		<b>0.49%</b>	<b>20,000</b>		<b>0.48%</b>

Name of Agency : Board of Public Contractors

Specify Funding Sources As Shown Below	FY 2020 Actual Amount	% of Line Item	% of Total Budget	FY 2021 Estimated Amount	% of Line Item	% of Total Budget	FY 2022 Requested Amount	% of Line Item	% of Total Budget
1. General _____ State Support Special (Specify) _____									
2. Budget Contingency Fund									
3. Education Enhancement Fund									
4. Health Care Expendable Fund									
5. Tobacco Control Fund									
6. Capital Expense Fund									
7. Working Cash Stabilization Reserve Fund									
8. BP Settlement Fund									
9. Gulf Coast Restoration Fund									
10. Back To Business Mississippi Grant Fund									
11. MS COVID-19 Relief Payment Fund									
12. DFA CARES Act COVID-19 Fund									
13. MS Tourism Recovery Fund									
14. MS Nonprofit Museums Recovery Fund									
15. Equity in Distance Learning Fund									
16. Postsecondary Education COVID-19 Relief Grant Fund									
17. Independent Schools' COVID-19 Assistance Grant Fund									
18. MS Pandemic Response Broadband Availability Grant Program Fund									
19. MS Emergency Management Agency COVID-19 Fund									
20. MS Electric Cooperatives Broadband COVID-19 Grant Program Fund									
21. COVID-19 Broadband Provider Grant Program Fund									
22. Federal _____ Other Special (Specify) _____									
23. Board of Contractors Operating Fund									
24. Construction Education Fund									
25.									
26.									
<b>Total Vehicles</b>									
1. General _____ State Support Special (Specify) _____									
2. Budget Contingency Fund									
3. Education Enhancement Fund									
4. Health Care Expendable Fund									
5. Tobacco Control Fund									
6. Capital Expense Fund									
7. Working Cash Stabilization Reserve Fund									
8. BP Settlement Fund									
9. Gulf Coast Restoration Fund									
10. Back To Business Mississippi Grant Fund									
11. MS COVID-19 Relief Payment Fund									
12. DFA CARES Act COVID-19 Fund									
13. MS Tourism Recovery Fund									
14. MS Nonprofit Museums Recovery Fund									
15. Equity in Distance Learning Fund									
16. Postsecondary Education COVID-19 Relief Grant Fund									
17. Independent Schools' COVID-19 Assistance Grant Fund									
18. MS Pandemic Response Broadband Availability Grant Program Fund									
19. MS Emergency Management Agency COVID-19 Fund									
20. MS Electric Cooperatives Broadband COVID-19 Grant Program Fund									
21. COVID-19 Broadband Provider Grant Program Fund									
22. Federal _____ Other Special (Specify) _____									
23. Board of Contractors Operating Fund									
24. Construction Education Fund									
25.									
26.									
<b>Total Wireless Communication Devs.</b>									

REQUEST BY FUNDING SOURCE

Name of Agency : Board of Public Contractors

Specify Funding Sources As Shown Below	FY 2020 Actual Amount	% of Line Item	% of Total Budget	FY 2021 Estimated Amount	% of Line Item	% of Total Budget	FY 2022 Requested Amount	% of Line Item	% of Total Budget
1. General _____ State Support Special (Specify) _____									
2. Budget Contingency Fund									
3. Education Enhancement Fund									
4. Health Care Expendable Fund									
5. Tobacco Control Fund									
6. Capital Expense Fund									
7. Working Cash Stabilization Reserve Fund									
8. BP Settlement Fund									
9. Gulf Coast Restoration Fund									
10. Back To Business Mississippi Grant Fund									
11. MS COVID-19 Relief Payment Fund									
12. DFA CARES Act COVID-19 Fund									
13. MS Tourism Recovery Fund									
14. MS Nonprofit Museums Recovery Fund									
15. Equity in Distance Learning Fund									
16. Postsecondary Education COVID-19 Relief Grant Fund									
17. Independent Schools' COVID-19 Assistance Grant Fund									
18. MS Pandemic Response Broadband Availability Grant Program Fund									
19. MS Emergency Management Agency COVID-19 Fund									
20. MS Electric Cooperatives Broadband COVID-19 Grant Program Fund									
21. COVID-19 Broadband Provider Grant Program Fund									
22. Federal _____ Other Special (Specify) _____									
23. Board of Contractors Operating Fund									
24. Construction Education Fund	2,058,291	100.00		2,300,000	100.00		2,300,000	100.00	
25.									
26.									
<b>Total Subsidies</b>	<b>2,058,291</b>		<b>56.59%</b>	<b>2,300,000</b>		<b>56.63%</b>	<b>2,300,000</b>		<b>55.29%</b>
1. General _____ State Support Special (Specify) _____									
2. Budget Contingency Fund									
3. Education Enhancement Fund									
4. Health Care Expendable Fund									
5. Tobacco Control Fund									
6. Capital Expense Fund									
7. Working Cash Stabilization Reserve Fund									
8. BP Settlement Fund									
9. Gulf Coast Restoration Fund									
10. Back To Business Mississippi Grant Fund									
11. MS COVID-19 Relief Payment Fund									
12. DFA CARES Act COVID-19 Fund									
13. MS Tourism Recovery Fund									
14. MS Nonprofit Museums Recovery Fund									
15. Equity in Distance Learning Fund									
16. Postsecondary Education COVID-19 Relief Grant Fund									
17. Independent Schools' COVID-19 Assistance Grant Fund									
18. MS Pandemic Response Broadband Availability Grant Program Fund									
19. MS Emergency Management Agency COVID-19 Fund									
20. MS Electric Cooperatives Broadband COVID-19 Grant Program Fund									
21. COVID-19 Broadband Provider Grant Program Fund									
22. Federal _____ Other Special (Specify) _____									
23. Board of Contractors Operating Fund	1,579,071	43.41%		1,761,101	43.37%		1,860,115	44.71%	
24. Construction Education Fund	2,058,291	56.59%		2,300,000	56.63%		2,300,000	55.29%	
25.									
26.									
<b>TOTAL</b>	<b>3,637,362</b>		<b>100.00%</b>	<b>4,061,101</b>		<b>100.00%</b>	<b>4,160,115</b>		<b>100.00%</b>

## SPECIAL FUNDS DETAIL

Board of Public Contractors (834-00)

Name of Agency

<b>S. STATE SUPPORT SPECIAL FUNDS</b>		<b>(1) Actual Revenues FY 2020</b>	<b>(2) Estimated Revenues FY 2021</b>	<b>(3) Requested Revenues FY 2022</b>
<b>Source (Fund Number)</b>	<b>Detailed Description of Source</b>			
Budget Contingency Fund	BCF - Budget Contingency			
Education Enhancement Fund	EEF - Education Enhancement Fund			
Health Care Expendable Fund	HCEF - Health Care Expendable Fund			
Tobacco Control Fund	TCF - Tobacco Control Fund			
Capital Expense Fund	CEF - Capital Expense Fund			
Working Cash Stabilization Reserve Fund	WCSRF - Working Cash Stabilization Reserve Fund			
BP Settlement Fund	BPSF - BP Settlement Fund			
Gulf Coast Restoration Fund	GCRF - Gulf Coast Restoration Fund			
Back To Business Mississippi Grant Fund	BTBMGF - Back To Business Mississippi Grant Fund			
MS COVID-19 Relief Payment Fund	MCRPF - MS COVID-19 Relief Payment Fund			
DFA CARES Act COVID-19 Fund	DCACF - DFA CARES Act COVID-19 Fund			
MS Tourism Recovery Fund	MTRF - MS Tourism Recovery Fund			
MS Nonprofit Museums Recovery Fund	MNMRF - MS Nonprofit Museums Recovery Fund			
Equity in Distance Learning Fund	EIDLF - Equity in Distance Learning Fund			
Postsecondary Education COVID-19 Relief Grant Fund	PECMRGF - Postsecondary Education COVID-19 Relief Grant Fund			
Independent Schools' COVID-19 Assistance Grant Fund	ISCAGF - Independent Schools' COVID-19 Assistance Grant Fund			
MS Pandemic Response Broadband Availability Grant Program Fund	MPRBAGPF - MS Pandemic Response Broadband Availability Grant Program Fund			
MS Emergency Management Agency COVID-19 Fund	MEMACF - MS Emergency Management Agency COVID-19 Fund			
MS Electric Cooperatives Broadband COVID-19 Grant Program Fund	MECBCGPF - MS Electric Cooperatives Broadband COVID-19 Grant Program Fund			
COVID-19 Broadband Provider Grant Program Fund	CBPGPF - COVID-19 Broadband Provider Grant Program Fund			
<b>State Support Special Fund TOTAL</b>				
STATE SUPPORT SPECIAL FUND LAPSE				

<b>A. FEDERAL FUNDS *</b>		<b>Percentage Match Requirement FY 2021 FY 2022</b>	<b>(1) Actual Revenues FY 2020</b>	<b>(2) Estimated Revenues FY 2021</b>	<b>(3) Requested Revenues FY 2022</b>
<b>Source (Fund Number)</b>	<b>Detailed Description of Source</b>				
	Cash Balance-Unencumbered				
<b>Federal Fund TOTAL</b>					

<b>B. OTHER SPECIAL FUNDS (NON-FED'L)</b>		<b>(1) Actual Revenues FY 2020</b>	<b>(2) Estimated Revenues FY 2021</b>	<b>(3) Requested Revenues FY 2022</b>
<b>Source (Fund Number)</b>	<b>Detailed Description of Source</b>			
	Cash Balance-Unencumbered	1,858,484	1,950,266	1,639,165
Board of Contractors Operating Fund (3383400000)	License Fees	1,818,963	1,820,000	1,825,000
Construction Education Fund (3383500000)		1,910,181	1,930,000	1,940,000
<b>Other Special Fund TOTAL</b>		<b>5,587,628</b>	<b>5,700,266</b>	<b>5,404,165</b>

## SPECIAL FUNDS DETAIL

Board of Public Contractors (834-00)

Name of Agency

<b>SECTIONS S + A + B TOTAL</b>	<b>5,587,628</b>	<b>5,700,266</b>	<b>5,404,165</b>
---------------------------------	------------------	------------------	------------------

C. TREASURY FUND/BANK ACCOUNTS *			(1) Reconciled Balance as of 6/30/20	(2) Balance as of 6/30/21	(3) Balance as of 6/30/22
Name of Fund/Account	Fund/Account Number	Name of Bank (If Applicable)			
Clearing Account	3383400000/3 383500000	Regions Clearing Account	2,000	2,000	2,000

\* Any non-federal funds that have restricted uses must be identified and narrative of restrictions attached.



## NARRATIVE OF SPECIAL FUNDS DETAIL AND TREASURY FUND/BANK ACCOUNTS

Board of Public Contractors (834-00)

---

Name of Agency

### OTHER SPECIAL FUNDS

The Mississippi State Board of Public Contractors is a special funds agency. The funds are received from the following sources:

STATE BOARD OF PUBLIC CONTRACTORS FUND 3383400000:

\$200 for each Commercial License – new applications and renewals

\$75 for each Residential License – renewals

Rent, and other miscellaneous fees charged

CONSTRUCTION EDUCATION FUND 3383500000:

\$200 for each Commercial License – new applications and renewals

\$25 for each Residential License – renewals

Civil penalties collected

The Construction Education Fund is restricted as follows:

Section 31-3-14 requires an additional fee for licenses as a commercial contractor and provides that the revenue derived therefrom shall be distributed by the State Board of Public Contractors to the Mississippi Construction Education Foundation, public high schools and community colleges that participate in the Mississippi Construction Education Foundation's "school-to-work" program, state universities that have construction technology programs, the Mississippi Housing Institute and certain construction education trusts approved by the Board for construction education and construction craft training to meet the needs of the construction industry in the State of Mississippi. The allocation of funds is a Board decision.

### TREASURY FUND / BANK

Clearing account for licenses, fees, permits, fines and penalties, rent and other fees collected and deposited before transferred into the State Treasury.

CONTINUATION AND EXPANDED TOTAL REQUEST

Board of Public Contractors (834-00)

SUMMARY OF ALL PROGRAMS

Name of Agency

Program

	FY 2020 Actual				
	(1) General	(2) State Support Special	(3) Federal	(4) Other Special	(5) Total
Salaries,Wages & Fringe				995,546	995,546
Travel				126,908	126,908
Contractual Services				380,875	380,875
Commodities				59,675	59,675
Other Than Equipment					
Equipment				16,067	16,067
Vehicles					
Wireless Communication Devices					
Subsidies, Loans & Grants				2,058,291	2,058,291
<b>Total</b>				<b>3,637,362</b>	<b>3,637,362</b>
No. of Positions (FTE)				16.00	16.00

	FY 2021 Estimated				
	(6) General	(7) State Support Special	(8) Federal	(9) Other Special	(10) Total
Salaries,Wages & Fringe				1,060,153	1,060,153
Travel				168,000	168,000
Contractual Services				453,698	453,698
Commodities				59,250	59,250
Other Than Equipment					
Equipment				20,000	20,000
Vehicles					
Wireless Communication Devices					
Subsidies, Loans & Grants				2,300,000	2,300,000
<b>Total</b>				<b>4,061,101</b>	<b>4,061,101</b>
No. of Positions (FTE)				16.00	16.00

	FY 2022 Increase/Decrease for Continuation				
	(11) General	(12) State Support Special	(13) Federal	(14) Other Special	(15) Total
Salaries,Wages & Fringe				99,014	99,014
Travel					
Contractual Services					
Commodities					
Other Than Equipment					
Equipment					
Vehicles					
Wireless Communication Devices					
Subsidies, Loans & Grants					
<b>Total</b>				<b>99,014</b>	<b>99,014</b>
No. of Positions (FTE)					

Note: FY2022 Total Request = FY2021 Estimated + FY2022 Incr(Decr) for Continuation + FY2022 Expansion/Reduction of Existing Activities + FY2022 New Activities.

**CONTINUATION AND EXPANDED TOTAL REQUEST**

Board of Public Contractors (834-00)

SUMMARY OF ALL PROGRAMS

Name of Agency	Program				
	FY 2022 Expansion/Reduction of Existing Activities				
	(16) General	(17) State Support Special	(18) Federal	(19) Other Special	(20) Total
Salaries,Wages & Fringe					
Travel					
Contractual Services					
Commodities					
Other Than Equipment					
Equipment					
Vehicles					
Wireless Communication Devices					
Subsidies, Loans & Grants					
<b>Total</b>					
No. of Positions (FTE)					

	FY 2022 New Activities (*)				
	(21) General	(22) State Support Special	(23) Federal	(24) Other Special	(25) Total
Salaries,Wages & Fringe					
Travel					
Contractual Services					
Commodities					
Other Than Equipment					
Equipment					
Vehicles					
Wireless Communication Devices					
Subsidies, Loans & Grants					
<b>Total</b>					
No. of Positions (FTE)					

	FY 2022 Total Request				
	(26) General	(27) State Support Special	(28) Federal	(29) Other Special	(30) Total
Salaries,Wages & Fringe				1,159,167	1,159,167
Travel				168,000	168,000
Contractual Services				453,698	453,698
Commodities				59,250	59,250
Other Than Equipment					
Equipment				20,000	20,000
Vehicles					
Wireless Communication Devices					
Subsidies, Loans & Grants				2,300,000	2,300,000
<b>Total</b>				<b>4,160,115</b>	<b>4,160,115</b>
No. of Positions (FTE)				16.00	16.00

Note: FY2022 Total Request = FY2021 Estimated + FY2022 Incr(Decr) for Continuation + FY2022 Expansion/Reduction of Existing Activities + FY2022 New Activities.

**SUMMARY OF PROGRAMS**  
**FORM MBR-1-03sum**

Board of Public Contractors (834-00)

Name of Agency

FUNDING REQUESTED FISCAL YEAR 2022

PROGRAM		GENERAL	ST. SUPP. SPECIAL	FEDERAL	OTHER SPECIAL	TOTAL
1.	Licensure & Regulation				4,160,115	4,160,115
	Summary of All Programs				4,160,115	4,160,115

CONTINUATION AND EXPANDED REQUEST

Program 1 of 1

Board of Public Contractors (834-00)

Licensure & Regulation

Name of Agency

Program

	FY 2020 Actual				
	(1) General	(2) State Support Special	(3) Federal	(4) Other Special	(5) Total
Salaries,Wages & Fringe				995,546	995,546
Travel				126,908	126,908
Contractual Services				380,875	380,875
Commodities				59,675	59,675
Other Than Equipment					
Equipment				16,067	16,067
Vehicles					
Wireless Communication Devices					
Subsidies, Loans & Grants				2,058,291	2,058,291
<b>Total</b>				<b>3,637,362</b>	<b>3,637,362</b>
No. of Positions (FTE)				16.00	16.00

	FY 2021 Estimated				
	(6) General	(7) State Support Special	(8) Federal	(9) Other Special	(10) Total
Salaries,Wages & Fringe				1,060,153	1,060,153
Travel				168,000	168,000
Contractual Services				453,698	453,698
Commodities				59,250	59,250
Other Than Equipment					
Equipment				20,000	20,000
Vehicles					
Wireless Communication Devices					
Subsidies, Loans & Grants				2,300,000	2,300,000
<b>Total</b>				<b>4,061,101</b>	<b>4,061,101</b>
No. of Positions (FTE)				16.00	16.00

	FY 2022 Increase/Decrease for Continuation				
	(11) General	(12) State Support Special	(13) Federal	(14) Other Special	(15) Total
Salaries,Wages & Fringe				99,014	99,014
Travel					
Contractual Services					
Commodities					
Other Than Equipment					
Equipment					
Vehicles					
Wireless Communication Devices					
Subsidies, Loans & Grants					
<b>Total</b>				<b>99,014</b>	<b>99,014</b>
No. of Positions (FTE)					

Note: FY2022 Total Request = FY2021 Estimated + FY2022 Incr(Decr) for Continuation + FY2022 Expansion/Reduction of Existing Activities + FY2022 New Activities.

CONTINUATION AND EXPANDED REQUEST

Program 1 of 1

Board of Public Contractors (834-00)

Licensure & Regulation

Name of Agency

Program

	FY 2022 Expansion/Reduction of Existing Activities				
	(16) General	(17) State Support Special	(18) Federal	(19) Other Special	(20) Total
Salaries,Wages & Fringe					
Travel					
Contractual Services					
Commodities					
Other Than Equipment					
Equipment					
Vehicles					
Wireless Communication Devices					
Subsidies, Loans & Grants					
<b>Total</b>					
No. of Positions (FTE)					

	FY 2022 New Activities (*)				
	(21) General	(22) State Support Special	(23) Federal	(24) Other Special	(25) Total
Salaries,Wages & Fringe					
Travel					
Contractual Services					
Commodities					
Other Than Equipment					
Equipment					
Vehicles					
Wireless Communication Devices					
Subsidies, Loans & Grants					
<b>Total</b>					
No. of Positions (FTE)					

	FY 2022 Total Request				
	(26) General	(27) State Support Special	(28) Federal	(29) Other Special	(30) Total
Salaries,Wages & Fringe				1,159,167	1,159,167
Travel				168,000	168,000
Contractual Services				453,698	453,698
Commodities				59,250	59,250
Other Than Equipment					
Equipment				20,000	20,000
Vehicles					
Wireless Communication Devices					
Subsidies, Loans & Grants				2,300,000	2,300,000
<b>Total</b>				<b>4,160,115</b>	<b>4,160,115</b>
No. of Positions (FTE)				16.00	16.00

Note: FY2022 Total Request = FY2021 Estimated + FY2022 Incr(Decr) for Continuation + FY2022 Expansion/Reduction of Existing Activities + FY2022 New Activities.

PROGRAM DECISION UNITS

Board of Public Contractors				1 - Licensure & Regulation			
Name of Agency				Program Name			
	A	B	C	D	E	F	G
EXPENDITURES	FY 2021 Appropriated	Escalations By DFA	Non-Recurring Items	Realignment for Executive	Realignment for staff	Total Funding Change	FY 2022 Total Request
SALARIES	1,060,153			16,139	82,875	99,014	1,159,167
GENERAL							
ST. SUP. SPECIAL							
FEDERAL							
OTHER	1,060,153			16,139	82,875	99,014	1,159,167
TRAVEL	168,000						168,000
GENERAL							
ST. SUP. SPECIAL							
FEDERAL							
OTHER	168,000						168,000
CONTRACTUAL	453,698						453,698
GENERAL							
ST. SUP. SPECIAL							
FEDERAL							
OTHER	453,698						453,698
COMMODITIES	59,250						59,250
GENERAL							
ST. SUP. SPECIAL							
FEDERAL							
OTHER	59,250						59,250
CAPTITAL-OTE							
GENERAL							
ST. SUP. SPECIAL							
FEDERAL							
OTHER							
EQUIPMENT	20,000						20,000
GENERAL							
ST. SUP. SPECIAL							
FEDERAL							
OTHER	20,000						20,000
VEHICLES							
GENERAL							
ST. SUP. SPECIAL							
FEDERAL							
OTHER							
WIRELESS DEV							
GENERAL							
ST. SUP. SPECIAL							
FEDERAL							
OTHER							
SUBSIDIES	2,300,000						2,300,000
GENERAL							
ST. SUP. SPECIAL							
FEDERAL							
OTHER	2,300,000						2,300,000
TOTAL	4,061,101			16,139	82,875	99,014	4,160,115

FUNDING

GENERAL FUNDS							
ST. SUP. SPCL FUNDS							
FEDERAL FUNDS							
OTHER SP. FUNDS	4,061,101			16,139	82,875	99,014	4,160,115
TOTAL	4,061,101			16,139	82,875	99,014	4,160,115

POSITIONS

GENERAL FTE							
ST. SUP. SPCL. FTE							
FEDERAL FTE							
OTHER SP. FTE	16.00						16.00
TOTAL	16.00						16.00

PRIORITY LEVEL :

				1	1		
--	--	--	--	---	---	--	--

**PROGRAM NARRATIVE**

Program Data Collected in Accordance with the Mississippi Performance Budget and Strategic Planning Act of 1994  
(To Accompany Form MBR-1-03)

Board of Public Contractors

1 - Licensure &amp; Regulation

Name of Agency

Program Name

**I. Program Description:**

To license and regulate contractors performing construction work in the state.

Commercial construction in excess of \$50,000

Fire Protection systems on private jobs in excess of \$10,000

Public jobs in excess of \$5,000

Residential builders in excess of \$50,000

Roofers and remodelers in excess of \$10,000

In FY 2020, the Board received \$19,187 in SB2541 for legislatively enacted realignments. This amount was added to the agency's FY20 appropriations and was disbursed to staff members, minus the agency's Director.

**II. Program Objective:**

To protect the health, safety and general welfare of all persons dealing with those who are engaged in the vocation of contracting and to afford such persons an effective and practical protection against incompetent, inexperienced, unlawful and fraudulent acts of contractors.

**III. Current program activities as supported by the funding in Columns 6-15 (FY 2021 & FY 2022 Increase/Decrease for continuations) of MBR-1-03 and designated Budget Unit Decisions columns of MBR-1-03-A:****(D) Realignment for Executive Director:**

The Executive Director did not receive a legislative realignment of her position last year when most state employees did receive salary increases. We are requesting the realignment increase to be awarded in FY22. The total salary increases recommended was \$12,832. The total increase with fringe is \$16,139.

**(E) Realignment for staff:**

The agency is recommending realignments for FY22. Staff at the agency are at end step. We are requesting Legislative approval for these increases.



**PROGRAM PERFORMANCE MEASURES**

Program Data Collected in Accordance with the Mississippi Performance Budget and Strategic Planning Act of 1994

Board of Public Contractors (834-00)

1 - Licensure &amp; Regulation

Name of Agency

PROGRAM NAME

**PROGRAM OUTPUTS:** (This is the measure of the process necessary to carry on the goals and objectives of this program. This is the volume produced, i.e., how many people served, how many documents generated.)

	FY 2020 APPRO	FY 2020 ACTUAL	FY 2021 ESTIMATED	FY 2022 PROJECTED
1 New Residential Licenses (Number of)	350.00	296.00	350.00	350.00
2 Additional classification application received	400.00	434.00	400.00	400.00
3 New Commercial Licenses (Number of)	650.00	642.00	650.00	650.00
4 Renewed Residential Licenses (Number of)	2,700.00	2,671.00	2,700.00	2,700.00
5 Job Sites Visited (Number of Locations)	7,650.00	8,234.00	7,650.00	7,650.00
6 Renewed Commercial Licenses (Number of)	6,200.00	6,436.00	6,200.00	6,200.00

**PROGRAM EFFICIENCIES:** (This is the measure of the cost, unit cost or productivity associated with a given outcome or output. This measure indicates linkage between services and funding, i.e., cost per investigation, cost per student or number of days to complete investigation.)

	FY 2020 APPRO	FY 2020 ACTUAL	FY 2021 ESTIMATED	FY 2022 PROJECTED
1 Cost per License Issued or Renewed (\$)	226.25	221.84	226.25	231.75
2 Amount of penalties collected - Residential	30,000.00	14,850.00	30,000.00	30,000.00
3 Amount of penalties collected - Commercial	500,000.00	415,274.00	500,000.00	500,000.00

**PROGRAM OUTCOMES:** (This is the measure of the quality or effectiveness of the services provided by this program. This measure provides an assessment of the actual impact or public benefit of your agency's actions. This is the results produced, i.e., increased customer satisfaction by x% within a 12-month period, reduce the number of traffic fatalities due to drunk drivers within a 12-month period.)

	FY 2020 APPRO	FY 2020 ACTUAL	FY 2021 ESTIMATED	FY 2022 PROJECTED
1 Collect civil penalties percentage of time	80.00	82.00	80.00	80.00
2 Increase job sites visited (Number of)	7,650.00	8,234.00	7,650.00	7,650.00

**PROGRAM 3% GENERAL FUND REDUCTION AND NARRATIVE EXPLANATION**

Board of Public Contractors (834-00)

	Fiscal Year 2021 Funding			FY 2021 GF PERCENT REDUCED
	Total Funds	Reduced Amount	Reduced Funding Amount	

<b>Program Name:</b> (1) Licensure & Regulation	General				
	State Support Special				
	Federal				
	Other Special	4,061,101		4,061,101	
	<b>TOTAL</b>	<b>4,061,101</b>		<b>4,061,101</b>	
	<b>Narrative Explanation:</b>				

<b>Program Name:</b> (99) Summary of All Programs				
General				
State Support Special				
Federal				
Other Special	4,061,101		4,061,101	
<b>TOTAL</b>	<b>4,061,101</b>		<b>4,061,101</b>	

**MISSISSIPPI STATE BOARD OF CONTRACTORS MEMBERS**

Board of Public Contractors (834-00)

Name of Agency

A. Explain Rate and manner in which board members are reimbursed:

\$40 per diem per meeting and reimbursement for all travel expenses

B. Estimated number of meetings FY 2021:

12

C. Board Members	City, Town, Residence	Appointed By	Date Appointed	Length of Term
1. Kline, Thomas H.	Fulton, MS	Governor Bryant	07/01/2017	5 years
2. Neyland, Diane - Standing Committee	Madison, MS	Governor Bryant	07/01/2017	5 years
3. Norman, Tyler	Meridian, MS	Governor Bryant	07/01/2017	5 years
4. Sims, O. L.	Hattiesburg, MS	Governor Bryant	07/01/2017	5 years
5. Smith, David - Chairman Standing Committee	Canton, MS	Governor Bryant	07/01/2017	5 years
6. Smith, Madison H.	Tupelo, MS	Governor Bryant	07/01/2018	5 years
7. Carson, Norris Lee, Jr.	Carthage, MS	Governor Bryant	03/11/2019	Unexpired term
8. Allred, Tim - Standing Committee	Meridian, MS	Governor Bryant	07/01/2019	5 years
9. Fordice, Hunter L. - Vice Chairman	Vicksburg, MS	Governor Bryant	07/01/2019	5 years
10. Smith, Greg	Gulfport, MS	Governor Bryant	07/01/2019	5 years
11. Laws, III, John	Madison, MS	Governor Bryant	10/08/2019	Unexpired term
12. Carroll, Tony - Chairman	Amory, MS	Governor Reeves	07/01/2020	5 years
13. Estes, Kenneth - Standing Committee	Saltillo, MS	Governor Reeves	07/01/2020	5 years

Identify Statutory Authority (Code Section or Executive Order Number)\*

*Section 31-3-3, Mississippi Code of 1972 as amended in 2000*

\*If Executive Order, please attach copy.

**SCHEDULE B  
CONTRACTUAL SERVICES**

Board of Public Contractors (834-00)

Name of Agency

MINOR OBJECT OF EXPENDITURE	(1) Actual Expenses FY Ending June 30, 2020	(2) Estimated Expenses FY Ending June 30, 2021	(3) Requested for FY Ending June 30, 2022
<b>A. Tuition, Rewards &amp; Awards (61050xxx-61080xxx)</b>			
61050000 Tuition			
61060000 Employee Training	524	10,000	10,000
61070000 Travel Related Reg			
61080000 Rewards & Awards			
<b>Total</b>	<b>524</b>	<b>10,000</b>	<b>10,000</b>
<b>B. Transportation &amp; Utilities (61100xxx-61200xxx)</b>			
61100000 Transportation of Goods	754		
61110000 Postal Services	10,365	50,500	50,500
61200000 Utilities			
<b>Total</b>	<b>11,119</b>	<b>50,500</b>	<b>50,500</b>
<b>C. Public Information (61300xxx-6131xxxx)</b>			
61300000 Advert & Public Info	14,375	30,000	30,000
61310000 Promotional Expenses	500	1,000	1,000
<b>Total</b>	<b>14,875</b>	<b>31,000</b>	<b>31,000</b>
<b>D. Rents (61400xxx-61490xxx)</b>			
61400000 Building & Floor Space Rental	92,349	92,349	92,349
61420000 Equipment Rental	3,151	5,000	5,000
61430000 Capitol Facilities Rental			
61450000 Conference Rooms, Exhibits & Display Rentals			
<b>Total</b>	<b>95,500</b>	<b>97,349</b>	<b>97,349</b>
<b>E. Repairs &amp; Service (61500xxx)</b>			
61500000 Repair & Maint Serv	8,356	3,176	3,176
<b>Total</b>	<b>8,356</b>	<b>3,176</b>	<b>3,176</b>
<b>F. Fees, Professional &amp; Other Services (6161xxxx-61699xxx)</b>			
61600000 Inter-Agency Fees	41,499	34,957	34,957
61660000 Accounting & Financial Services	1,143	5,000	5,000
61670000 Legal & Related Services	38,277	75,175	75,175
61690000 Fees & Services	59,175	56,316	56,316
<b>Total</b>	<b>140,094</b>	<b>171,448</b>	<b>171,448</b>
<b>G. Other Contractual Services (61700xxx-61790xxx, 61900xxx)</b>			
61700000 Insurance Fees & Services	7,244	7,525	7,525
61705000 Banking & Credit Card Fees	2,367	2,650	2,650

**SCHEDULE B  
CONTRACTUAL SERVICES**

Board of Public Contractors (834-00)

Name of Agency

MINOR OBJECT OF EXPENDITURE	(1) Actual Expenses FY Ending June 30, 2020	(2) Estimated Expenses FY Ending June 30, 2021	(3) Requested for FY Ending June 30, 2022
61710000 Membership Dues	4,610	4,600	4,600
61715000 Trade Subscriptions		200	200
61730000 Dry Cleaning,			
61735000 Salvage, Demo, Removal			
61900000 Procurement Card - Contractual Purchases	8,749	5,000	5,000
<b>Total</b>	<b>22,970</b>	<b>19,975</b>	<b>19,975</b>

**H. Information Technology (61800xxx-61890xxx)**

61800000 Basic Telephone Monthly - Outside Vendor			
61803000 Long Distance Charges - Outside Vendor			
61806000 Data Line & Network Charges - Outside Vendor	2,145	2,100	2,100
61818000 Cellular Usage Time Outside Vendor	3,753	4,250	4,250
61821000 Wireless Data Transmission - not cell - Outside Vendor			
61824000 Satellite Voice Transmission Services - Outside Vendor			
61830000 IT Professional Fees - Outside Vendor	12,805	25,000	25,000
61833000 IS Training & Education - Outside Vendor			
61836000 Outsourced IT Solutions - Outside Vendor	9,413	9,000	9,000
61839000 Software Acq. Installation & Maint - Outside Vendor	13,593	25,000	25,000
61842000 Rental of IT Equipment - Outside Vendor			
61845000 Off-site Storage of IS Software & Data - Outside Vendor			
61848000 Maint & Repair of IT Equipment - Outside Vendor	83		
61850000 Payments to ITS	5,745	4,900	4,900
<b>Total</b>	<b>47,537</b>	<b>70,250</b>	<b>70,250</b>

**I. Other (61910xxx-61990xxx)**

61910000 Petty Cash Expense - Contractual			
61920000 Travel Related Contractual Reimbursements			
61950000 Prior Year Exp - Contract Worker Travel			
61955000 Prior Year Exp - Contract Worker Matching Amts			
61960000 Prior Year Exp - Contractual	39,900		
61965000 Prior Year Exp - Contractual -			
<b>Total</b>	<b>39,900</b>		

<b>Grand Total</b> (Enter on Line 1-B of Form MBR-1)	<b>380,875</b>	<b>453,698</b>	<b>453,698</b>
---	----------------	----------------	----------------

<b>Funding Summary:</b>			
General Funds			
State Support Special Funds			

SCHEDULE B  
CONTRACTUAL SERVICES

Board of Public Contractors (834-00)

---

Name of Agency

MINOR OBJECT OF EXPENDITURE	(1) Actual Expenses FY Ending June 30, 2020	(2) Estimated Expenses FY Ending June 30, 2021	(3) Requested for FY Ending June 30, 2022
Federal Funds			
Other Special Funds	380,875	453,698	453,698
Total Funds	380,875	453,698	453,698

**SCHEDULE C  
COMMODITIES**

Board of Public Contractors (834-00)

Name of Agency

MINOR OBJECT OF EXPENDITURE	(1) Actual Expenses FY Ending June 30, 2020	(2) Estimated Expenses FY Ending June 30, 2021	(3) Requested for FY Ending June 30, 2022
<b>A. Maintenance &amp; Constr. Materials &amp; Supplies (62000xxx, 62015xxx)</b>			
62015000 Building & Construction Mat	4,700		
<b>Total</b>	<b>4,700</b>		
<b>B. Printing &amp; Office Supplies &amp; Materials (62010xxx, 62085xxx, 62100xxx, 62125xxx, 62400xxx)</b>			
62010000 Books, Periodicals, Maps & Instructional Material			
62085000 Office Supplies & Materials	12,736	16,500	16,500
62100000 Printing Cost & Supplies	77		
62400000 Furniture & Equipment	2,287	7,500	7,500
<b>Total</b>	<b>15,100</b>	<b>24,000</b>	<b>24,000</b>
<b>C. Equipment Repair Parts, Supplies &amp; Acces. (6205xxxx, 62072xxx, 62110xxx, 62115xxx, 62120xxx, 62130xxx)</b>			
62050000 Fuel	467	1,000	1,000
62055000 Fuel Card Repairs & Maintenance			
62072000 Shop Supplies			
62110000 Parts & Access - Heating, Cooling, Plumbing, Electric			
62115000 Parts & Access - Office, IT, & Other Equipment	1,937	5,000	5,000
62120000 Parts & Access - Vehicles, Buses, Planes, etc.			
62130000 Tires & Tubes			
<b>Total</b>	<b>2,404</b>	<b>6,000</b>	<b>6,000</b>
<b>D. Professional &amp; Sci. Supplies and Materials (62025xxx, 62030xxx, 62070xxx, 62095xxx, 62105xxx, 6212xxxx)</b>			
62025000 Educational Material	627		
62070000 Lab & Medical Supplies	718		
62105000 Promotional Material	14,558	15,000	15,000
<b>Total</b>	<b>15,903</b>	<b>15,000</b>	<b>15,000</b>
<b>E. Other Supplies &amp; Materials (62005xxx, 62015xxx, 62020xxx, 62035xxx, 62040xxx, 62045xxx, 62060xxx, 62065xxx, 62075xxx-62080xxx, 62090xxx, 62115xxx, 62135xxx, 62140xxx, 62405xxx, 62415xxx, 62500xxx-62999xxx)</b>			
62020000 Decals & Signs - Other Than Construction	84	175	175
62040000 Food for Business Meetings	4,521	6,000	6,000
62045000 Food for Persons			
62046000 Food for Persons - P Card			
62060000 Janitorial & Cleaning Supplies	2,321	75	75
62078000 Other Miscellaneous Supplies			
62135000 Uniforms & Apparel	6,634	5,000	5,000
62405000 Vehicle Equipment			
62410000 Camera & Camera Equipment			
62415000 Computer & Computer Equipment	707		

**SCHEDULE C  
COMMODITIES**

Board of Public Contractors (834-00)

Name of Agency

MINOR OBJECT OF EXPENDITURE	(1) Actual Expenses FY Ending June 30, 2020	(2) Estimated Expenses FY Ending June 30, 2021	(3) Requested for FY Ending June 30, 2022
62700000 Art, Coll & Hist Treas	340		
62900000 Procurement Card - Commodity Purchases	6,790	3,000	3,000
62910000 Petty Cash Expenses - Commodities			
62920000 Reimbursable Travel - Commodities	171		
62930000 Intergovernmental Commodity Purchases			
62960000 Prior Year Expense - Commodities			
62999000 Commodities - No PO Required			
<b>Total</b>	<b>21,568</b>	<b>14,250</b>	<b>14,250</b>
<b>Grand Total</b> (Enter on Line 1-C of Form MBR-1)	<b>59,675</b>	<b>59,250</b>	<b>59,250</b>
<b>Funding Summary:</b>			
General Funds			
State Support Special Funds			
Federal Funds			
Other Special Funds	59,675	59,250	59,250
<b>Total Funds</b>	<b>59,675</b>	<b>59,250</b>	<b>59,250</b>



SCHEDULE D-1  
CAPITAL OUTLAY  
OTHER THAN EQUIPMENT

Board of Public Contractors (834-00)  
Name of Agency

MINOR OBJECT OF EXPENDITURE	(1) Actual Expenses FY Ending June 30, 2020	(2) Estimated Expenses FY Ending June 30, 2021	(3) Requested for FY Ending June 30, 2022
Grand Total <i>(Enter on Line 1-D-1 of Form MBR-1)</i>			
Funding Summary:			
General Funds			
State Support Special Funds			
Federal Funds			
Other Special Funds			
Total Funds			

**SCHEDULE D-2  
CAPITAL OUTLAY EQUIPMENT**

Board of Public Contractors (834-00)

Name of Agency

EQUIPMENT BY ITEM	Act. FY Ending June 30, 2020		Est. FY Ending June 30, 2021		Req. FY Ending June 30, 2022	
	No. of Units	Total Cost	No. of Units	Total Cost	No. of Units	Total Cost

<b>C. Office Machines, Furniture, Fixtures, Equip. (63200xxx)</b>						
Office Equipment	2		2	10,000	2	10,000
Copier	1					
<b>Total</b>				<b>10,000</b>		<b>10,000</b>

<b>D. IS Equipment (DP &amp; Telecommunications) (63200xxx)</b>						
Laptop/Notebooks			8	10,000	8	10,000
Server & Related Equipment						
Desktop Computers	12	16,067				
<b>Total</b>		<b>16,067</b>		<b>10,000</b>		<b>10,000</b>

<b>Grand Total</b> <i>(Enter on Line 1-D-2 of Form MBR-1)</i>		<b>16,067</b>		<b>20,000</b>		<b>20,000</b>
--	--	---------------	--	---------------	--	---------------

<b>Funding Summary:</b>			
General Funds			
State Support Special Funds			
Federal Funds			
Other Special Funds	16,067	20,000	20,000
<b>Total Funds</b>	<b>16,067</b>	<b>20,000</b>	<b>20,000</b>

**SCHEDULE D-3  
PASSENGER/WORK VEHICLES**

Board of Public Contractors (834-00)

Name of Agency

MINOR OBJECT OF EXPENDITURE	Vehicle Inventory June 30, 2020	Act. FY Ending June 30, 2020		Est. FY Ending June 30, 2021		Req. FY Ending June 30, 2022	
		No. of Units	Total Cost	No. of Units	Total Cost	No. of Units	Total Cost

**A. Passenger & Work Vehicles (63300xxx)**

633001000 Crew Cab Truck	1						
<b>Total (A)</b>	<b>1</b>						

**GRAND TOTAL**

(Enter on Line 1-D-3 of Form MBR-1)

<b>Funding Summary:</b>			
General Funds			
State Support Special Funds			
Federal Funds			
Other Special Funds			
<b>Total Funds</b>			

**SCHEDULE D-4  
WIRELESS COMMUNICATION DEVICES**

Board of Public Contractors (834-00)

Name of Agency

MINOR OBJECT OF EXPENDITURE	Device Inventory June 30, 2020	Act. FY Ending June 30, 2020		Est. FY Ending June 30, 2021		Req. FY Ending June 30, 2022	
		No. of Devices	Actual Cost	No. of Devices	Estimated Cost	No. of Devices	Requested Cost

<b>Grand Total</b> <i>(Enter on Line 1-D-4 of Form MBR-1)</i>			
--	--	--	--

<b>Funding Summary:</b>			
General Funds			
State Support Special Funds			
Federal Funds			
Other Special Funds			
<b>Total Funds</b>			

**SCHEDULE E**  
**SUBSIDIES, LOANS & GRANTS**

Board of Public Contractors (834-00)

Name of Agency

MINOR OBJECT OF EXPENDITURE	(1) Actual Expenses FY Ending June 30, 2020	(2) Estimated Expenses FY Ending June 30, 2021	(3) Requested for FY Ending June 30, 2022
-----------------------------	--	---	--

<b>A. School Grants to Counties &amp; Municipalities (67020xxx, 67300xxx-67650xxx)</b>			
67020000 Grantor Payments	2,058,291	2,300,000	2,300,000
<b>Total</b>	<b>2,058,291</b>	<b>2,300,000</b>	<b>2,300,000</b>
<b>Grand Total</b> <i>(Enter on Line 1-E of Form MBR-1)</i>	<b>2,058,291</b>	<b>2,300,000</b>	<b>2,300,000</b>

<b>Funding Summary:</b>			
General Funds			
State Support Special Funds			
Federal Funds			
Other Special Funds	2,058,291	2,300,000	2,300,000
<b>Total Funds</b>	<b>2,058,291</b>	<b>2,300,000</b>	<b>2,300,000</b>

## **Mississippi State Board of Public Contractors**

### **FY22 Budget Narrative**

#### **Agency Overview**

The responsibility for licensing and regulating Mississippi's construction industry is under the authority of the Mississippi State Board of Public Contractors. The agency was created by the Legislature in 1952 to protect the public from irresponsible contractors. The Board strives to be a model regulatory agency working to protect the health, safety and welfare of individuals without being overly burdensome to contractors or a deterrent to business. Protecting the health, safety, and general welfare of all persons dealing with those who are engaged in the vocation of contracting and to afford such persons an effective and practical protection against incompetent, inexperienced, unlawful and fraudulent acts of contractors is the Board's overriding mission.

The agency is constantly working to strengthen expertise in the areas of administrative law, regulatory law and rulemaking to improve the quality of the construction industry and its licensees and establish greater trust and credibility with the public.

The Board requires all contractors to meet minimum qualifications and ensures they adhere to all legal requirements and applicable regulations. The Board also promulgates rules and regulations necessary for implementing and enforcing the licensing laws, and disciplining licensees found in violation of the statute.

A portion of license fees collected by MSBOC are designated exclusively for construction education as required by statute. In FY20, over \$2 million was paid to educational institutions offering construction education and craft training. In FY21 and FY22, the Board of Public Contractors intends to award up to \$2.3 million in educational grants each fiscal year.

Pursuant to SB2541, the agency was granted \$19,187 to fund salary realignments for staff for FY20. This amount was added to the FY20 appropriations and was disbursed to all staff members except the agency Director.

#### **Board and Staffing**

The Board is comprised of ten members appointed to staggered terms by the Governor. A five-member residential standing committee oversees residential contractors. The Board is extremely conscientious and meets monthly to review licensing and compliance issues and provide oversight to agency operations.

The agency has 16 employees. Approximately 60% of the staff are assigned to the Investigative Division, which is charged with protecting the public and ensuring licensing and

other Board requirements are met. The Investigative Division is sub-divided into three geographical locations, each of which has a supervisor assigned to oversee the work of the licensing investigators. There are three employees within the Licensing and Administrative units which come under the direct supervision of an Office Director, who serves as a deputy to the Executive Director.

During FY20, the Board of Public Contractors was forced to grapple with historic flooding, devastating tornadoes, and a global pandemic. The agency, deemed an essential business, continued working and serving the public despite the challenges. The agency was able to develop policies for the investigative staff that allowed for the continuation of their job functions, and allowed all staff to remain safe.

### **Budget Request**

The Board of Public Contractors is requesting a salary realignment for its Executive Director. The Director has been with the agency since 2008 and has reached the top of her pay scale. No salary adjustment can be made for the Director unless the end step is extended. The State Personnel Board has recommended that the position be aligned by \$12,832. The Board is requesting full realignment for this position. The total increase, with fringe, is \$16,139.

Pursuant to SB2541, the agency was granted \$19,187 to fund salary realignments for staff for FY20. This amount was added to the FY20 appropriations and was disbursed to all staff members except the agency Director. The three percent realignment was granted in Fiscal Year 2020 instead of the amount recommended for each position. We were able to fund the realignment portion for Fiscal Year 2020, but did not receive approval to fund the remaining portion for our staff in Fiscal Year 2021. As a result, we are requesting that unfunded portion of the recommended alignment by the State Personnel Board be approved for each staff member. The total cost, with fringe, would be \$82,875. The agency, which operates exclusively from fees collected for licensure, can sustain the request and it would not cause an undue hardship to the State of Mississippi.

TONY CARROLL  
Chairman  
Amory

THOMAS KLINE  
Fulton

JOHN LAWS, III  
Madison

DAVID SMITH  
Ridgeland

GREG SMITH  
Gulfport



HUNTER L. FORDICE  
Vice-Chairman  
Vicksburg

TYLER NORMAN  
Meridian

O.L. SIMS  
Hattiesburg

MADISON H. SMITH  
Tupelo

NORRIS LEE CARSON, JR.  
Carthage

**MISSISSIPPI**  
**State Board of Contractors**

MS State Board of Public Contractors (834-00)

Out of State Travel

<u>Employee Name</u>	<u>Destination</u>	<u>Purpose</u>	<u>Cost</u>	<u>Fund Source</u>
Kate Hillard	Baltimore, MD	NASCLA Conference	\$1,966	Special Funds
James Cushman	Baltimore, MD	NASCLA Conference	\$2,039	Special Funds
Charles Sharman	Baltimore, MD	NASCLA Conference	\$1,983	Special Funds
Charles Sharman	Montgomery, AL	AL Home Builders Meeting	\$215	Special Funds
Stephanie Lee	Baton Rouge, LA	LA Contractors Board Meeting	\$255	Special Funds
Stephanie Lee	Montgomery, AL	AL Home Builders Meeting	\$201	Special Funds
Stephanie Lee	Baltimore, MD	NASCLA Conference	\$2,054	Special Funds
Stephanie Lee	Pensacola, FL	AGC Convention	\$1,796	Special Funds
Stephanie Lee	Phoenix, AZ	NASCLA Mid-Year Board Meeting	<u>\$663</u>	Special Funds
<b>Total Out of State Travel:</b>			<b>\$11,172</b>	



# FEES, PROFESSIONAL AND OTHER SERVICES

Board of Public Contractors (834-00)

Name of Agency

TYPE OF FEE AND NAME OF VENDOR	Retired w/ PERS	(1) Actual Expenses FY Ending June 30, 2020	(2) Estimated Expenses FY Ending June 30, 2021	(3) Requested Expenses FY Ending June 30, 2022	Fund Source
61600000 Inter-Agency Fees					
61600000/Inter-agency Fees - AG					
Comp. Rate:					
61600000/Inter-agency Fees - DFA					
Comp. Rate: Set by DFA	N	41,499	34,957	34,957	Special
61600000/Inter-agency Fees - OSA					
Comp. Rate:					
61600000/Inter-agency Fees - SPB					
Comp. Rate:					
<b>Total 61600000 Inter-Agency Fees</b>		<b>41,499</b>	<b>34,957</b>	<b>34,957</b>	
61660000 Accounting & Financial Services					
American Municipal Service/Collection of Fines					
Comp. Rate: 20% of Collected Amount	N	1,143	5,000	5,000	Special
<b>Total 61660000 Accounting &amp; Financial Services</b>		<b>1,143</b>	<b>5,000</b>	<b>5,000</b>	
61670000 Legal & Related Services					
Butler Snow/Legal Services					
Comp. Rate: \$185/hour	N	33,868	65,000	65,000	Special
Stegall Notary/Notary Licensing					
Comp. Rate: Set Fee	N	266	175	175	Special
Trudie Quinn/Court Reporting					
Comp. Rate: \$250/appearance & \$6.50/page	N	4,143	10,000	10,000	Special
<b>Total 61670000 Legal &amp; Related Services</b>		<b>38,277</b>	<b>75,175</b>	<b>75,175</b>	
61690000 Fees & Services					
AERO Quest/UAS Test					
Comp. Rate: Flat Fee	N		200	200	Special
CDE Integrated Systems/Telephone System Repair					
Comp. Rate: Varies	N	100			Special
Central MS Speciality/Board Photos					
Comp. Rate: Flat Rate	N	848			Special
Cornerstone Consulting Group/Professional Services, Payroll &					
Comp. Rate: \$85/hour	N	26,244	25,000	25,000	Special
First Intermed/MEA Cares/Employee Assistance					
Comp. Rate: \$264/quarter	N	1,056	1,056	1,056	Special
Fudge/Printing					
Comp. Rate: Quotes	N	19,673	19,000	19,000	Special
Harrison County Sheriff Dept/Process Service					
Comp. Rate: Flat Rate	N	35			Special
Investigations Unlimited/Investigations/Process Server					
Comp. Rate: \$35/inspection	N	1,355	1,500	1,500	Special
Johnnie Daniels/Real Estate Inspections					
Comp. Rate: \$500/each	N		1,500	1,500	Special

# FEES, PROFESSIONAL AND OTHER SERVICES

Board of Public Contractors (834-00)

Name of Agency

TYPE OF FEE AND NAME OF VENDOR	Retired w/ PERS	(1) Actual Expenses FY Ending June 30, 2020	(2) Estimated Expenses FY Ending June 30, 2021	(3) Requested Expenses FY Ending June 30, 2022	Fund Source
LogoStore USA Inc./Uniforms/Promotional Material					
<i>Comp. Rate: Quotes</i>	N	782			Special
Mad Genius/Advertising					
<i>Comp. Rate: Quotes</i>	N	5,000			Special
MEA Drug Testing/Employee Drug Testing					
<i>Comp. Rate: \$250/year</i>	N	275	250	250	Special
MS Prison Industries/Printing					
<i>Comp. Rate: Quotes</i>	N	728	1,500	1,500	Special
National Association of State Contractors/Printing					
<i>Comp. Rate: Quotes &amp; Shipping</i>	N	750	500	500	Special
Pennington & Trim/Alarm Service					
<i>Comp. Rate: Annual Fee</i>	N	363	1,700	1,700	Special
Quality Printing/Printing					
<i>Comp. Rate: Quotes</i>	N	1,428	1,500	1,500	Special
S & S Management Group/Security					
<i>Comp. Rate: \$11.99/hour</i>	N	390	1,500	1,500	Speical
Staffers/Temp. Employment					
<i>Comp. Rate: State Rates</i>	N	58			Special
Venture Technologies/Maintenance					
<i>Comp. Rate: \$130/each</i>	N		910	910	Special
William Haynes Miller/Pump Cleaning					
<i>Comp. Rate: \$90/hour</i>	N	90	200	200	Special
<b>Total 61690000 Fees &amp; Services</b>		<b>59,175</b>	<b>56,316</b>	<b>56,316</b>	
<b>GRAND TOTAL</b>		<b>140,094</b>	<b>171,448</b>	<b>171,448</b>	

## VEHICLE PURCHASE DETAILS

Board of Public Contractors (834-00)

Name of Agency

Year	Model	Person(s) Assigned To	Vehicle Purpose/Use	Replacement Or New?	FY2022 Req. Cost
------	-------	-----------------------	---------------------	------------------------	---------------------

TOTAL VEHICLE REQUEST

MS State Board of Public Contractors (834-00)

Vehicle Inventory

Vehicle Type	Vehicle Description	Model Year	Model	Person Assigned To	Purpose/Use	Tag #	Mileage on 6/30/20	Average Miles Per Year	Replacement Proposed
W	Truck ¾ Ton Crew Cab	2017	Dodge	Pool	Disaster Recovery	G 75257	18,598	4,000	No

MS State Board of Public Contractors (834-00)

Vehicle Pool List

Stephanie Lee

Charles Sharman

James Cushman

Wallace Pogue

Joe Hawkins

Rhonda Washington

**PRIORITY OF DECISION UNITS  
FISCAL YEAR 2022**

Board of Public Contractors (834-00)

Name of Agency

Program	Decision Unit	Object	Amount
<b>Priority # 1</b>			
	Program # 1: Licensure & Regulation		
	Realignment for Executive Director		
		Salaries	16,139
		<b>Totals</b>	16,139
		Other Special Funds	16,139
	Realignment for staff		
		Salaries	82,875
		<b>Totals</b>	82,875
		Other Special Funds	82,875

## CAPITAL LEASES

Board of Public Contractors (834-00)

Name of Agency

VENDOR/ ITEM LEASED	Original Date of Lease	Original No. of Months of Lease	No. of Months Remaining on 6-30-20	Last Payment Date	Interest Rate	Amount of Each Payment			Total of Payments To Be Made					
						Actual FY 2020			Estimated FY 2021			Requested FY 2022		
						Principal	Interest	Total	Principal	Interest	Total	Principal	Interest	Total

**Summary of 3% General Fund Program Reduction to FY 2021 Appropriated Funding by Major Object**

Board of Public Contractors (834-00)

Name of Agency

<b>Major Object</b>	<b>FY2021 General Fund Reduction</b>	<b>EFFECT ON FY2021 STATE SUPPORT SPECIAL FUNDS</b>	<b>EFFECT ON FY2021 FEDERAL FUNDS</b>	<b>EFFECT ON FY2021 OTHER SPECIAL FUNDS</b>	<b>TOTAL 3% REDUCTIONS</b>
<b>SALARIES, WAGES, FRINGE</b>					
<b>TRAVEL</b>					
<b>CONTRACTUAL</b>					
<b>COMMODITIES</b>					
<b>OTHER THAN EQUIPMENT</b>					
<b>EQUIPMENT</b>					
<b>VEHICLES</b>					
<b>WIRELESS COMM. DEVS.</b>					
<b>SUBSIDIES, LOANS, ETC</b>					
<b>TOTALS</b>					




**BOARD OF PUBLIC CONTRACTORS**

AGENCY: 0834

FY 2021

JULY, 2020

  
Executive Director

**APPOINTED OFFICIAL BOARD OF  
CONTRACTORS**

X-15 (80.5) EE 0002

AGENCY HEAD

**OFFICE DIRECTOR I**

00001

X16 (59.3) EE 0007

Assistant to Director

**ACCOUNTANT/AUDITOR II**

21111

29.2 N 0006

**LICENSE/REGISTRATION AGENT III**

31110

32.2 N 0003

Director of Licensure

**LICENSE/REGISTRATION  
AGENT I**

31111

26.6 N 0009

Process Applications

**LOCENSE/REGISTRATION  
AGENT I**

31112

26.6 N 0010

Process Applications

**BUREAU DIRECTOR I**

11110

50.4 EA 0013

Director of Enforcement

**LICENSE/REGISTRATION  
AGENT I**

11112

26.6 N 0018

Enforcement Assistant

**ADMIN ASSISTANT VII**

21110

34.4 N 018

Enforcement Admin  
Assistant

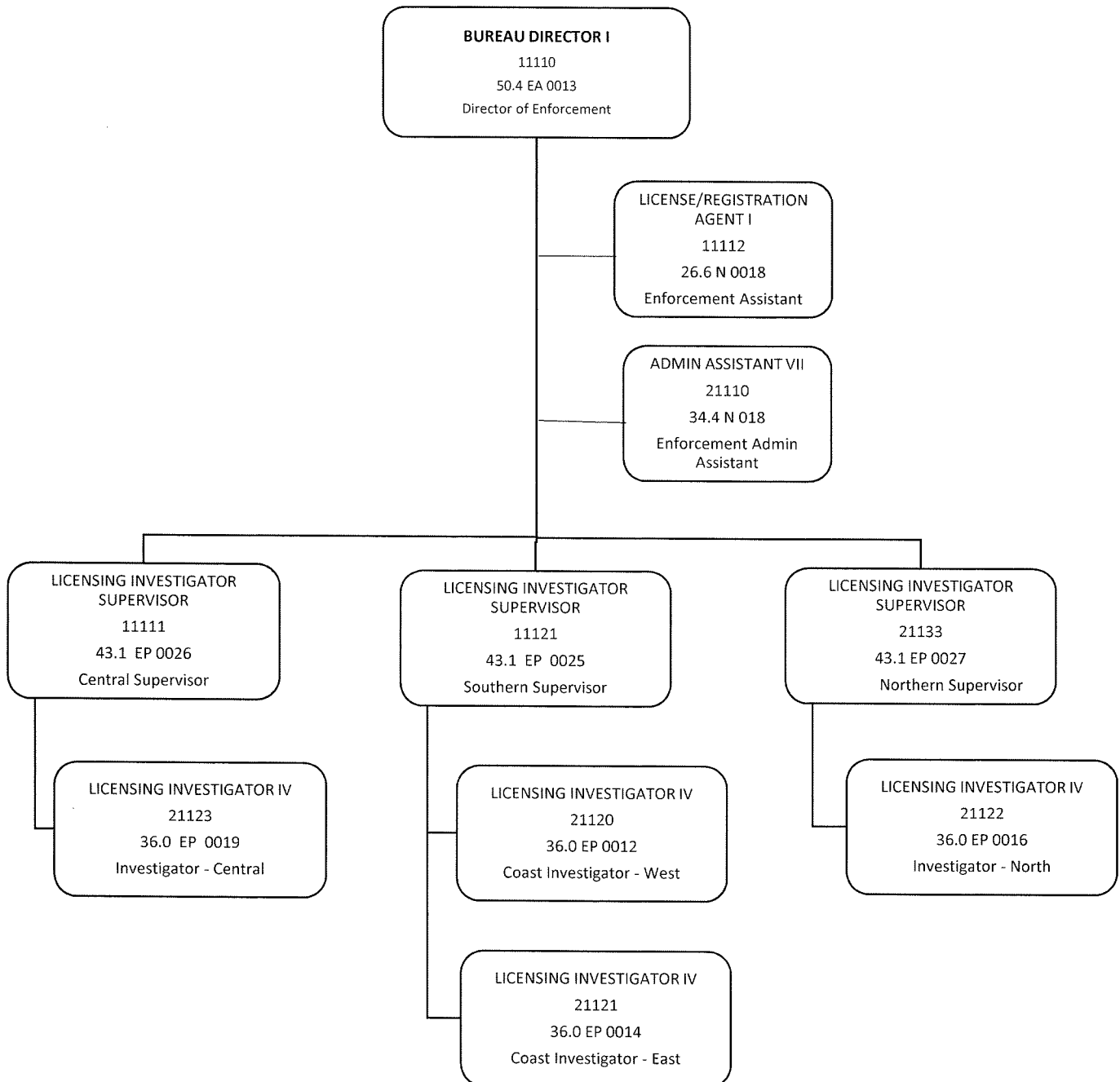
**See Page 2**

**BOARD OF PUBLIC CONTRACTORS**

AGENCY: 0834

Enforcement

Page 2



# Agency Revenue Source Report - FY2020 Data

As Required by HB 831, 2015 Legislative Session

And SB 2387, 2016 Legislative Session

Agency Name Board of Public Contractors

Budget Year 2020

State Support Sources Amount Received  
General Funds N/A

State Support Special Funds: Amount Received  
Education Enhancement Funds N/A  
Health Care Expendable Funds N/A  
Tobacco Control Funds N/A  
Capital Expense Funds N/A  
Budget Contingency Funds N/A  
Working Cash Stabilization Reserve Funds N/A  
BP Settlement Fund N/A  
Gulf Coast Restoration Fund N/A  
SSSF new 1 N/A  
SSSF new 2 N/A  
SSSF new 3 N/A  
SSSF new 4 N/A  
SSSF new 5 N/A

List all Federal Funds at its most specific level, such as an office or division, include name of grant, grantor, not the federal department.

Federal Funds Amount Received  
Federal Fund #1 N/A  
Federal Fund #2 N/A

Description of any Maintenance of Effort agreements entered into with any federal agency or subdivision thereof

Action or results promised in order to receive funds

Special Funds Amount Received  
Special Fund 3383400000 \$1,818,963  
Special Fund 3383500000 \$1,910,181  
Add Rows for Additional Special Funds

Contractor's License Renewal  
Contractor's Licens Renewal and Penalties

## Revenue from Tax, Fine or Fee Assessed Fees (License Applications and Renewals)

Amount Assessed  
Amount Collected  
Authority to Collect  
Method of Determining Assessment

See Schedule Below  
\$3,729,144  
MS Code Sections 31-3-13, 31-3-14  
Statutory  
Funds remitted via check are collected by the Agency and deposited into a clearing bank account, and transferred to DFA into the Agency special funds daily. Electronically submitted funds go directly into the Agency's special funds.

Method of Collection  
Amt. & Purpose for which Expended Amount

\$0  
\$0  
\$3,637,362

Purpose  
The funds are deposited into Special Fund #3383400000 and utilized to offset all expenses of the Agency.  
They are distributed to the MS Construction Education Foundation, public high schools and community colleges that participate in the MCEF's School-To-Work program, state universities that have construction technology programs, and the MS Housing Institut

Total Expenditures

**Assessment of Penalties**

Amount Assessed	Various
Amount Collected	<b>\$426,680</b>
Authority to Collect	MS Code Section 31-3-21
Method of Determining Assessment	Statutory
	Funds are collected by the Agency and Transferred into the Agency's special fund.
Method of Collection	
Amt. & Purpose for which Expended Amount	Purpose
	The funds are deposited into the Construction Education Fund #3383500000.
Amount Transferred to General Fund	N/A
Authority for Transfer to General Fund	N/A
Amount Transferred to Another Entity	N/A
Authority for Transfer to Other Entity	N/A
Name of Other Entity	N/A
Fiscal Year-Ending Balance	<b>\$1,950,266</b>

**MS BOARD OF PUBLIC CONTRACTORS**  
**Fees Assessed**  
**June 30, 2020**

DESCRIPTION	FEE
Commercial Active	\$25.00
Commercial Additional Class	\$100.00
Commercial Duplicate License	\$50.00
Commercial Inactive	\$25.00
Commercial Info Request	Varies
Commercial Late Renewal	\$50.00
Commercial Name Change	\$50.00
Commercial New Application	\$400.00
Commercial Penalties	Varies
Commercial Qualifier	\$25.00
Commercial Renewal	\$400.00
Commercial Verification	\$25.00
Commercial Waiver	\$50.00
Residential Active	\$25.00
Residential Additional Class	\$50.00
Residential Continue Education	Varies
Residential Duplicate License	\$50.00
Residential Inactive	\$25.00
Residential Info Request	Varies
Residential Late Renewal	\$10.00
Residential Name Change	\$50.00
Residential New Application	\$50.00
Residential Penalties	Varies
Residential Qualifier	\$25.00
Residential Renewal	\$100.00
Residential Verification	\$25.00
Residential Waiver	\$50.00